



Toronto Centre of Excellence on
Youth Homelessness Prevention
at York University

Prioritising Prevention 1: Anticipating Risky Transitions

CANADA'S YOUTH HOMELESSNESS PREVENTION MOVEMENT

OPPORTUNITIES AND LESSONS LEARNED

Amanda Buchnea, Canadian Observatory on Homelessness

Emily Kellway, Making the Shift Youth Homelessness Social Innovation Lab

Overview

1

Specific focus on
youth

2

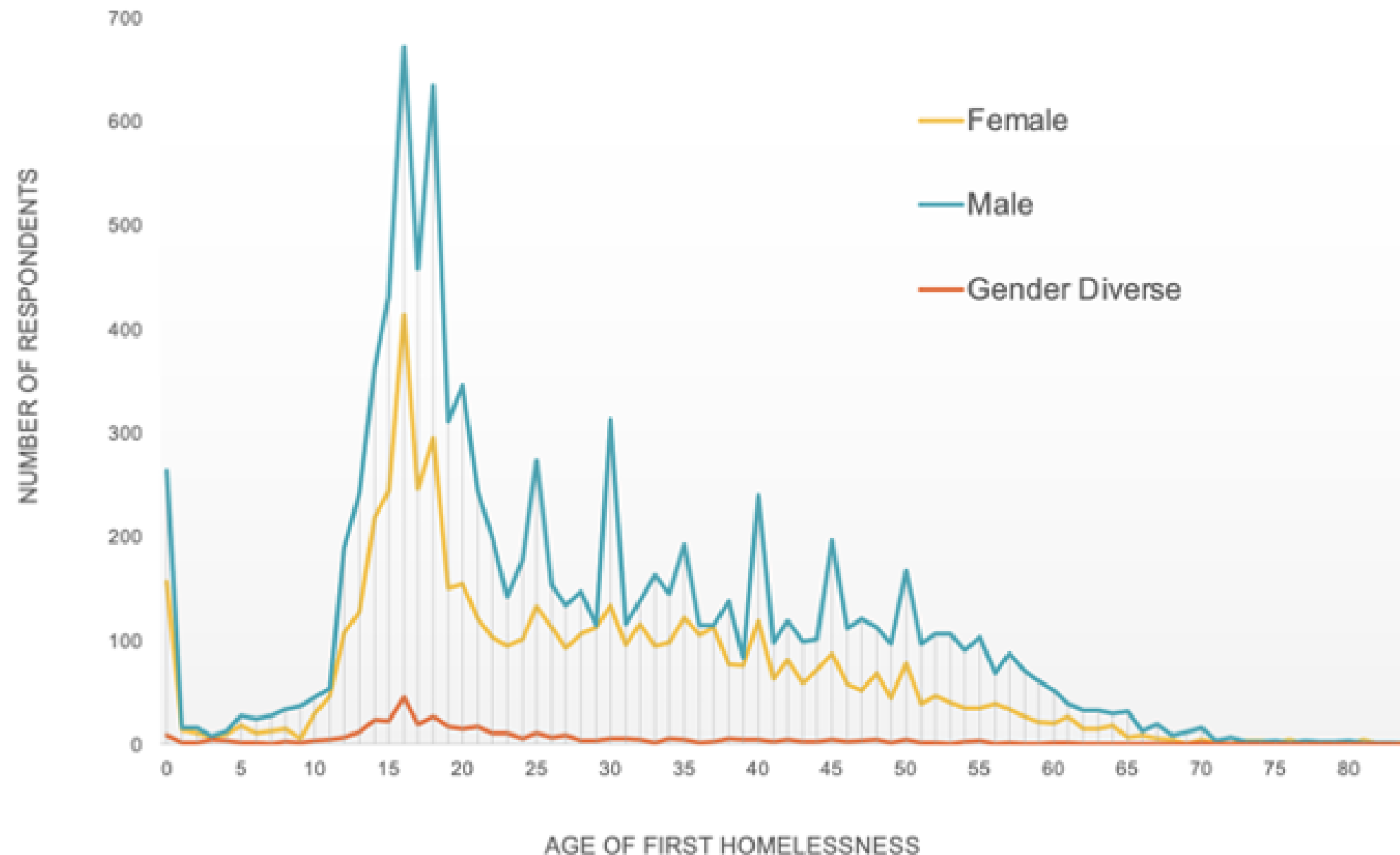
Cross-systems
approach

3

Enhancing family
and natural
supports

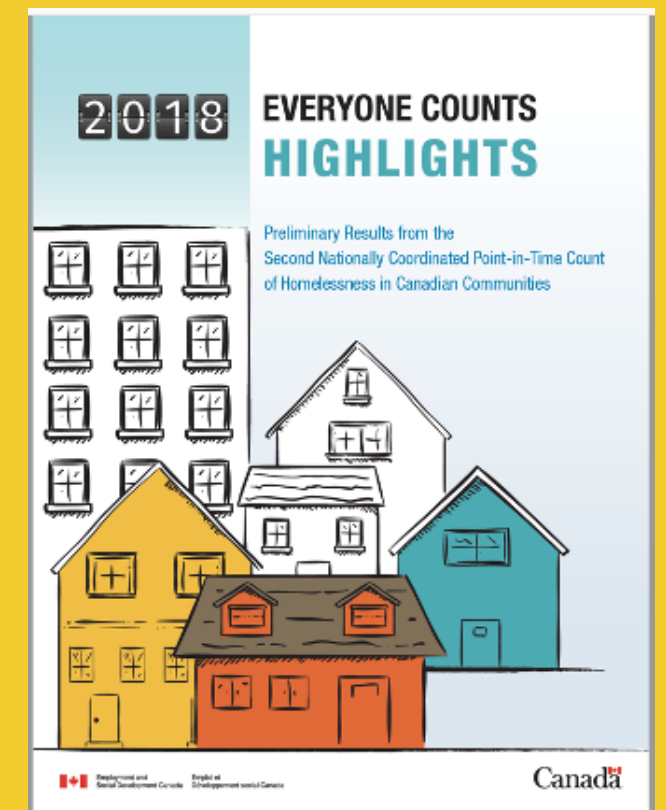
Why youth homelessness prevention?

Selected research findings on youth (PiT 2018)



The 2018 PiT Count survey asked respondents at what age they first experienced homelessness.

Half of all respondents first experienced homelessness under the age of 25. This percentage was still high among older adults (aged 50-64) and seniors (aged 65+), with 25% first experiencing homelessness before 25.



Working across the prevention typology



1. Structural Prevention

2. Systems Prevention

3. Early Intervention

4. Crisis Intervention

5. Stabilization



Youth
homelessness
is a fusion
policy issue

Working within, between
and across systems is
essential for prevention.

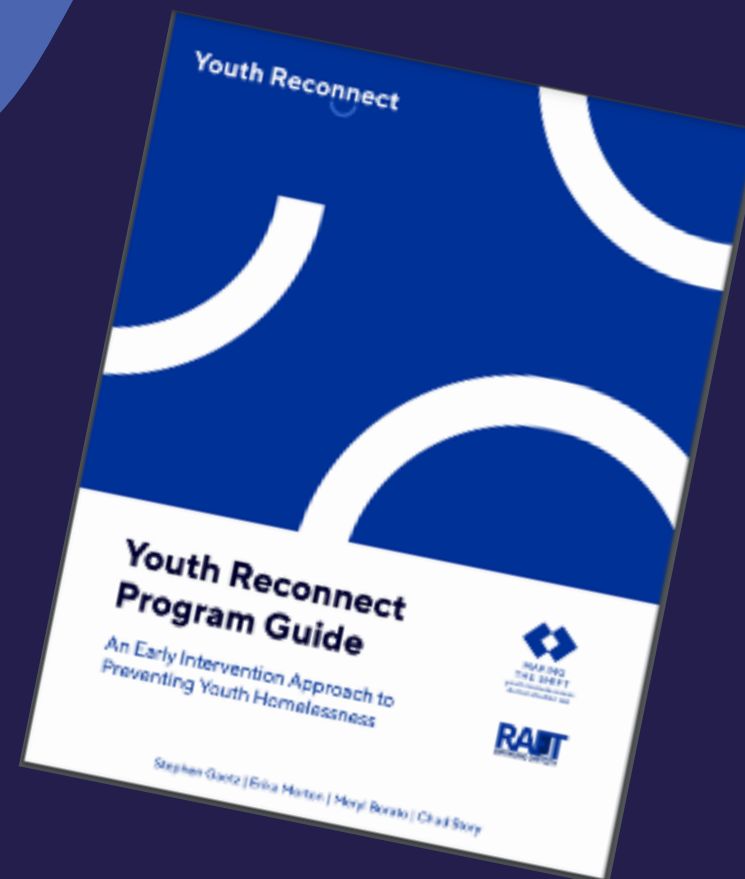
77%

of young people want to
improve contact and
relationships with family
(Gaetz et al., 2016)



Enhancing Family and Natural Supports

The support of caring adults is important to almost everyone and can be an asset that enhances young people's quality of life, and gives youth a sense of belonging, identity, security, self-esteem, and someone to rely on when problems emerge.





Key Takeaway

Preventing youth homelessness is essential for preventing and ending chronic adult homelessness, and our efforts must reflect the ways in which young people are embedded in networks of systems and relationships.



The Global Survey on Legal Services for Youth Experiencing Homelessness

Help us map existing legal services for youth experiencing homelessness around the globe by completing the survey at:

ambar.org/hyln

For more information or questions, email Kelly.Russo@americanbar.org



MAKING THE SHIFT^{INC}



canadian
observatory on
homelessness

A WAY HOME
VERS UN CHEZ-SOI



Toronto Centre of Excellence on
Youth Homelessness Prevention
at York University

thank you!

Amanda Buchnea

Strategy, Policy and Innovation Specialist,
Canadian Observatory on Homelessness

abuchnea@yorku.ca

Emily Kellway

Toronto Centre of Excellence & Policy Coordinator,
*Making the Shift Youth Homelessness
Social Innovation Lab*

ekellway@yorku.ca