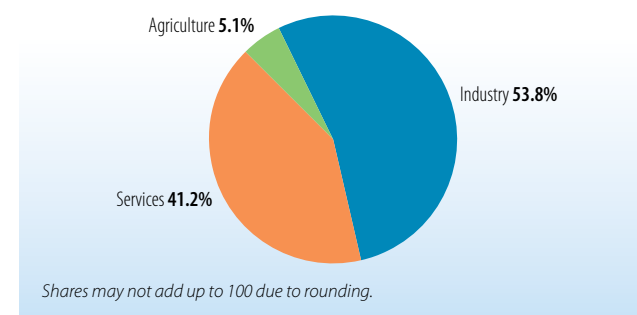
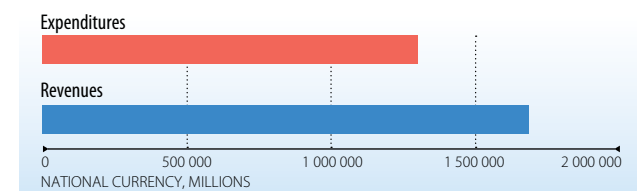


BASIC INDICATORS	
Population (thousands, 2009) ¹	1 475
GDP (millions current USD, 2009) ²	11 062
GDP real growth rate (annual %, 2009) ³	-1.0
GDP per capita, PPP (current international dollars, 2009) ⁴	14 419.2
Income group ⁵	UMIC
Poverty (% living below USD 1.25/day, 2005) ⁶	4.8
Income share held by highest 20% (% , 2005) ⁷	47.9
Labour force, female (% of total labour force, 2008) ⁸	46.4
Human development index (2010) ⁹	93/169
Aid dependency (ODA/GNI, 2008) ¹⁰	0.4

GDP - COMPOSITION BY SECTOR¹¹



BUDGET¹²

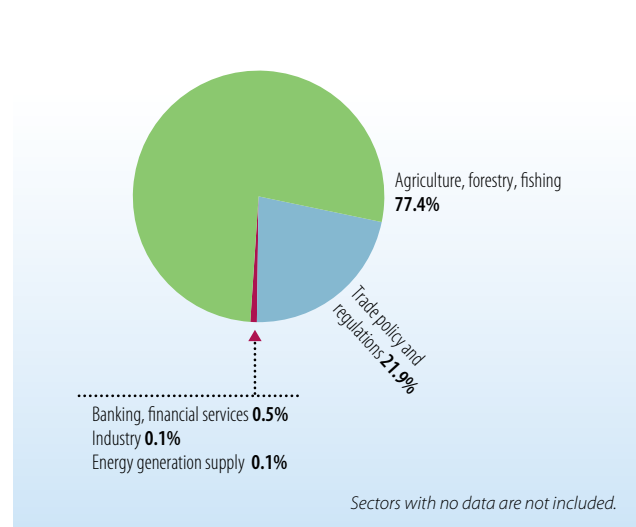


SOURCES:

- WTO Trade Profiles 2010
- WTO Trade Profiles 2010
- World Bank - National Accounts Data
- World Bank - World Development Indicators
- DAC List of ODA Recipients 2009/2010
- World Bank - World Development Indicators
- World Bank - World Development Indicators
- World Bank - World Development Indicators
- UNDP - Human Development Report 2010
- World Bank - World Development Indicators
- World Bank - National Accounts Data
- IMF's World Economic Outlook Database, Government Finance
- OECD-DAC, Aid activities database (CRS)
- OECD/WTO Questionnaire
- World Bank - World Trade Indicators
- ITU, World Bank - World Development Indicators
- ITC (WTO/UNCTAD)
- World Bank - Doing Business
- WTO Secretariat
- WTO Secretariat
- WTO Secretariat

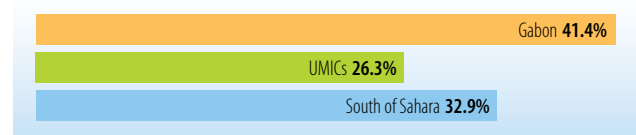
AID FLOWS ¹³			
FLOWS (USD '000, 2009 constant)			
Aid for Trade	Commitments 2002-05 avg.	2009	Disbursements 2009
Trade policy and regulations	..	4 627	12
Economic infrastructure	16 757	22	10 434
Building productive capacity	25 974	16 459	7 705
Of which: Trade development marker	..	786	127
Trade-related adjustment
Total AFT	42 732	21 108	18 151
<i>AFT per capita (USD)</i>	<i>32</i>	<i>14</i>	<i>12</i>

BY SECTOR (Share in total AFT, commitments, 2009)



SHARE IN ODA (Commitments, 2008-09 avg.)

AFT share in sector allocable ODA compared to its region and income group shares



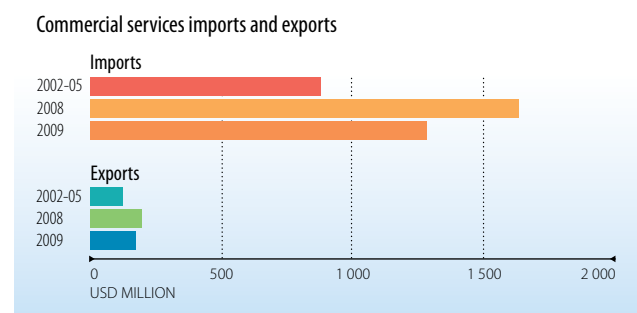
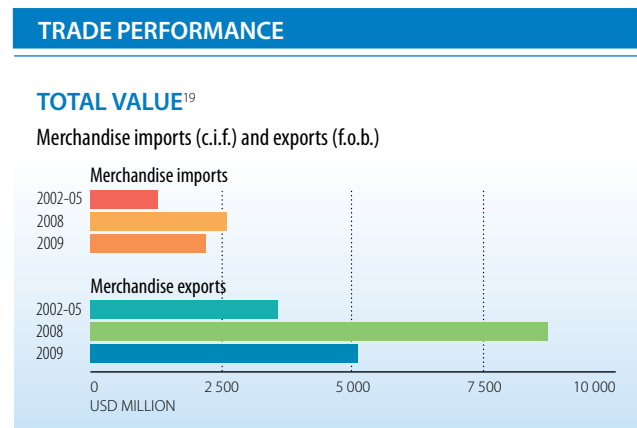
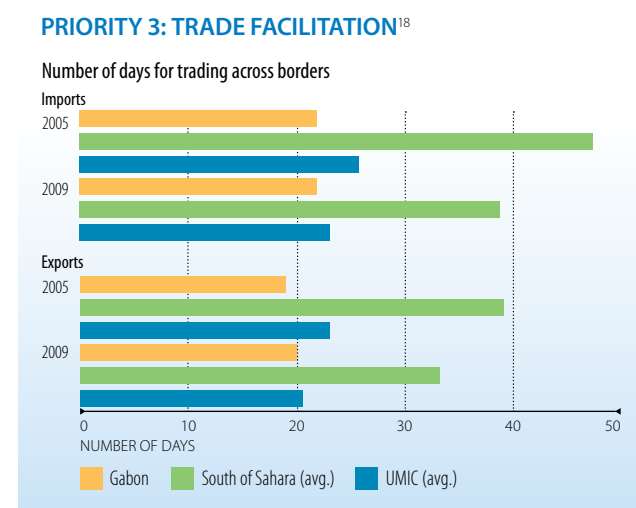
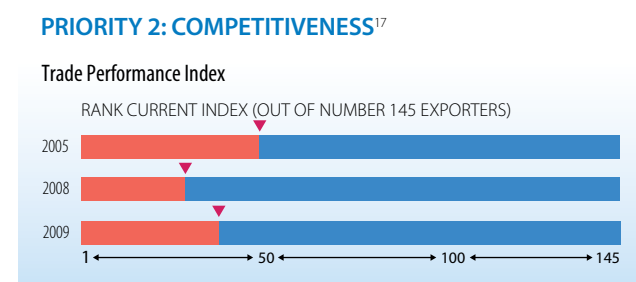
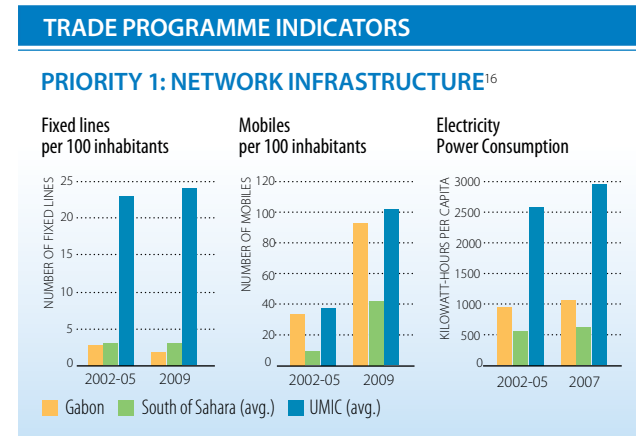
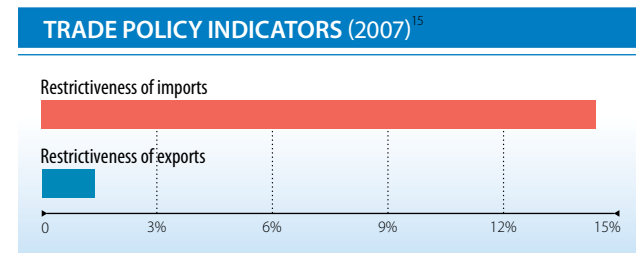
TOP DONORS (USD '000, 2009 constant)

Commitments	2008-09 avg.	99.9%
France	31 701	
Japan	9 250	
EU Institutions	2 089	
Canada	342	
IMF	296	
Belgium	51	Top donors' share in total AFT

Disbursements	2008-09 avg.	99.7%
France	8 030	
EU Institutions	7 971	
Japan	3 009	
United States	61	
Canada	59	
Belgium	51	Top donors' share in total AFT

TRADE MAINSTREAMING¹⁴

Changes to aid-for-trade priorities have been mainstreamed in the national development plan and operational strategies have been updated accordingly.



MAIN TRADING PARTNERS²⁰

Imports by main origin (% share of total)

	2006	2008	2009
European Union	66.9	-	-
United States	7.3	-	-
Cameroon	3.5	-	-

Exports by main destination (% share of total)

	2006	2008	2009
United States	58.4	-	-
European Union	12.1	-	-
China	10.6	-	-

