

# OECD ABSTRACT OF AGRICULTURAL AND FORESTRY TRACTOR PERFORMANCE TEST

---

**OECD Approval Number**

**2/2 952**

**OECD Approval Date**

**09/05/2016**

<b>Make</b>	<b>FERRARI</b>
<b>Model</b>	<b>COBRAM 60 AR</b>
<b>Make</b>	<b>BCS</b>
<b>Model</b>	<b>VALIANT 600 AR</b>
<b>Make</b>	<b>PASQUALI</b>
<b>Model</b>	<b>EOS 5.60</b>

**Type**

**4 WD**

Transmission

mechanical

Speed

30 km/h

Manufacturer

BCS S.p.A.

Testing Station

DISTAL – Italy



FERRARI  
BCS  
PASQUALI

COBRAM 60 AR – 4 WD  
VALIANT 600 AS – 4 WD  
EOS 5.60 – 4 WD

2/2 952

## SPECIFICATIONS

---

---

### ENGINE

---

<i>Make</i>	KOHLER
<i>Model</i>	KDI2504M/26
<i>Type</i>	Direct injection
<i>Supercharging</i>	No
<i>Cylinders</i>	4
<i>Disposition</i>	vertical in line
<i>Capacity</i>	2282 cm <sup>3</sup>
<i>Cooling</i>	Liquid

---

### TRANSMISSION

---

<i>Gear box</i>	Mechanical
<i>Number of forward and reverse speeds</i>	12
<i>Speed at rated engine speed</i>	from 0,82 to 32,6 km/h

---

### POWER TAKE-OFF SPECIFICATIONS

---

<i>Standard Power take-off speed</i>	<u>540 min<sup>-1</sup></u>	<u>1000 min<sup>-1</sup></u>
<i>Power take-off speed at rated engine speed</i>	585 min <sup>-1</sup>	
<i>Diameter of the shaft</i>	35 mm	<i>Not</i>
<i>Number of splines</i>	6	<i>Available</i>

## PTO TEST RESULTS

### One hour test at maximum power

Power, Engine and Power take-off speed	32,1 kW	2600 min <sup>-1</sup>	584 min <sup>-1</sup>
Hourly and specific consumption		10,76 l/h	280 g/kWh
Hourly and specific urea consumption		-	-

### Test at maximum power at rated engine speed

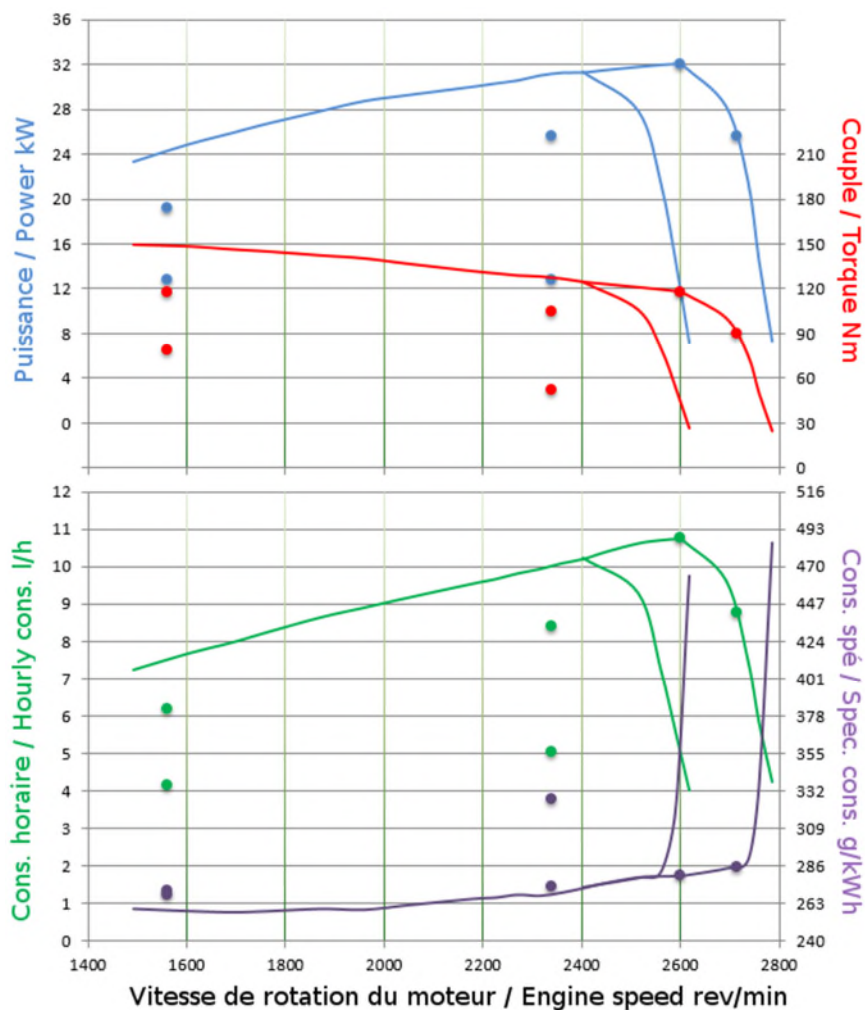
Power, Engine and Power take-off speed	32,1 kW	2600 min <sup>-1</sup>	584 min <sup>-1</sup>
Hourly and specific consumption		10,76 l/h	280 g/kWh
Hourly and specific urea consumption		-	-

### Test at standard Power take-off speed

Power, Engine and Power take-off speed	31,3 kW	2403 min <sup>-1</sup>	540 min <sup>-1</sup>
Hourly and specific consumption		10,21 l/h	273 g/kWh
Hourly and specific urea consumption		-	-

### Torque rise

Maximum torque, Engine speed corresponding	149,3 Nm	1491 min <sup>-1</sup>	26,7 %
--	----------	------------------------	--------



## PARTICULATE FILTER ACTIVE REGENERATION FUEL USE

*Not Applicable*

## HYDRAULIC PERFORMANCE AND POWER LIFT TEST

Hydraulic system

open centre

Relief valve pressure setting (tolerance):

18 ± 1,0 MPa

## HYDRAULIC PERFORMANCES

At maximum hydraulic power

Flow rate, Pressure, Power (couplers: 1 pair)

23,10 l/min

15,75 MPa

5,94 kW

Flow rate, Pressure, Power (couplers: 2 pairs or +)

*Not*

*Applicable*

## POWER LIFT

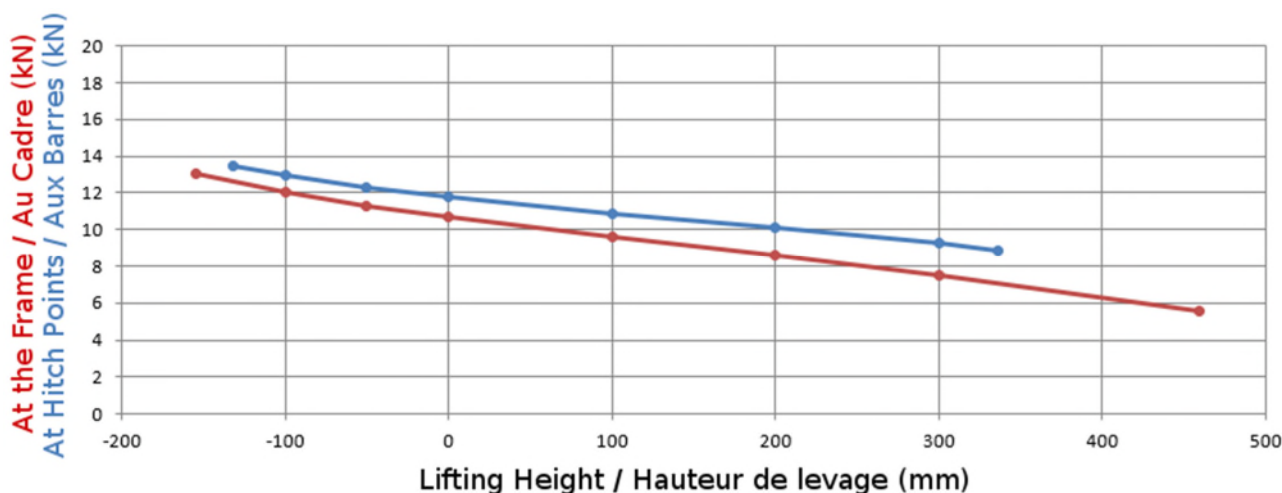
Maximum lifting force

*at the hitch points*

8,87 kN

*at the frame*

5,54 kN



FERRARI  
BCS  
PASQUALI

COBRAM 60 AR – 4 WD  
VALIANT 600 AS – 4 WD  
EOS 5.60 – 4 WD

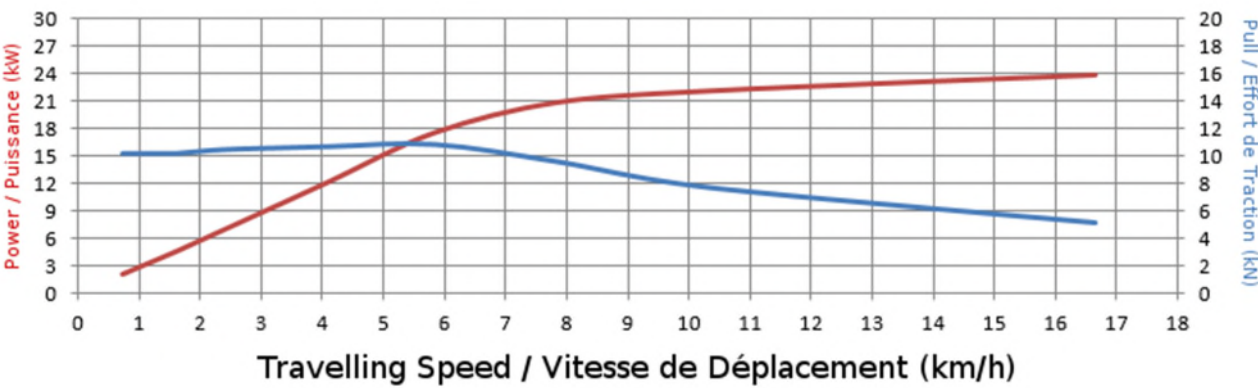
2/2 952

DRAWBAR TEST

Front tyres, Rear tyres	280/70 R18	280/70 R18
Inflation pressure	240 kPa	240 kPa

UNBALLASTED

Total Mass	1378 kg
Maximum drawbar pull	10,79 kN
at speed of	5,85 km/h
Maximum power	23,82 kW
at speed of	16,65 km/h



BALLASTED

Not available

