

OECD ABSTRACT OF AGRICULTURAL AND FORESTRY TRACTOR PERFORMANCE TEST

OECD Approval Number

2/2 945

OECD Approval Date

19/04/2016

| | |
|--------------|---------------------|
| Make | LANDINI |
| Model | MULTIFARM 80 |
| Make | McCORMICK |
| Model | A80 MAX |

Type

4 WD

Transmission

mechanical

Speed

30 km/h

Manufacturer

ARGO TRACTORS S.p.A.

Testing Station

DISTAL – Italy



SPECIFICATIONS

ENGINE

| | |
|----------------------|----------------------|
| <i>Make</i> | PERKINS |
| <i>Model</i> | 1104D-44 / 2969/2200 |
| <i>Type</i> | Direct injection |
| <i>Supercharging</i> | No |
| <i>Cylinders</i> | 4 |
| <i>Disposition</i> | vertical in line |
| <i>Capacity</i> | 4400cm ³ |
| <i>Cooling</i> | Liquid |

TRANSMISSION

| | |
|---|-----------------------|
| <i>Gear box</i> | Mechanical |
| <i>Number of forward and reverse speeds</i> | 12 |
| <i>Speed at rated engine speed</i> | from 1,6 to 33,3 km/h |

POWER TAKE-OFF SPECIFICATIONS

| | | |
|---|-----------------------------|------------------------------|
| <i>Standard Power take-off speed</i> | <u>540 min⁻¹</u> | <u>1000 min⁻¹</u> |
| <i>Power take-off speed at rated engine speed</i> | 611 min ⁻¹ | 1146 min ⁻¹ |
| <i>Diameter of the shaft</i> | 35 mm | 35 mm |
| <i>Number of splines</i> | 6 | 21 |

PTO TEST RESULTS

One hour test at maximum power

| | | | |
|--|---------|------------------------|-----------------------|
| Power, Engine and Power take-off speed | 48,7 kW | 2200 min ⁻¹ | 611 min ⁻¹ |
| Hourly and specific consumption | | 16,90 l/h | 291 g/kWh |
| Hourly and specific urea consumption | | - | - |

Test at maximum power at rated engine speed

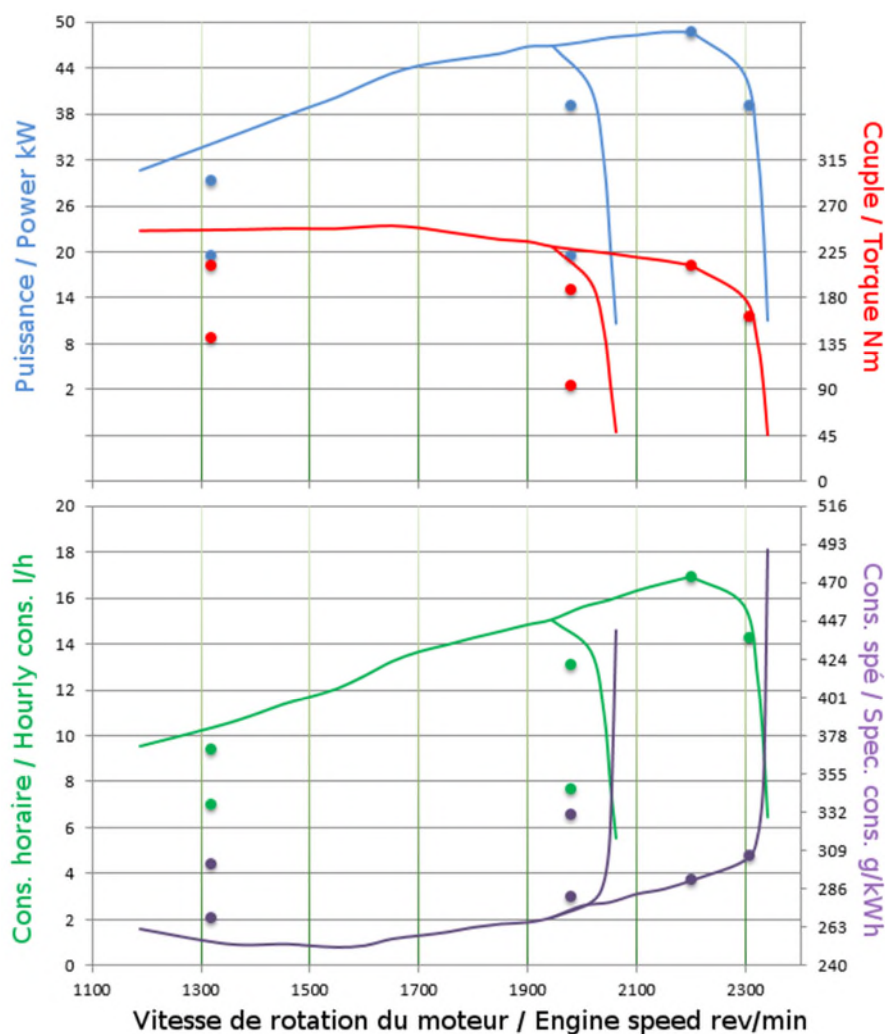
| | | | |
|--|---------|------------------------|-----------------------|
| Power, Engine and Power take-off speed | 48,7 kW | 2200 min ⁻¹ | 611 min ⁻¹ |
| Hourly and specific consumption | | 16,90 l/h | 291 g/kWh |
| Hourly and specific urea consumption | | - | - |

Test at standard Power take-off speed

| | | | |
|--|---------|------------------------|-----------------------|
| Power, Engine and Power take-off speed | 46,9 kW | 1944 min ⁻¹ | 540 min ⁻¹ |
| Hourly and specific consumption | | 15,04 l/h | 269 g/kWh |
| Hourly and specific urea consumption | | - | - |

Torque rise

| | | | |
|--|----------|------------------------|--------|
| Maximum torque, Engine speed corresponding | 250,8 Nm | 1650 min ⁻¹ | 18,5 % |
|--|----------|------------------------|--------|



PARTICULATE FILTER ACTIVE REGENERATION FUEL USE

Not Applicable

HYDRAULIC PERFORMANCE AND POWER LIFT TEST

Hydraulic system

open centre

Relief valve pressure setting (tolerance):

19 ± 0,5 MPa

HYDRAULIC PERFORMANCES

At maximum hydraulic power

Flow rate, Pressure, Power (couplers: 1 pair)

36,74 l/min

17,14 MPa

10,49 kW

Flow rate, Pressure, Power (couplers: 2 pairs or +)

Not

Applicable

POWER LIFT

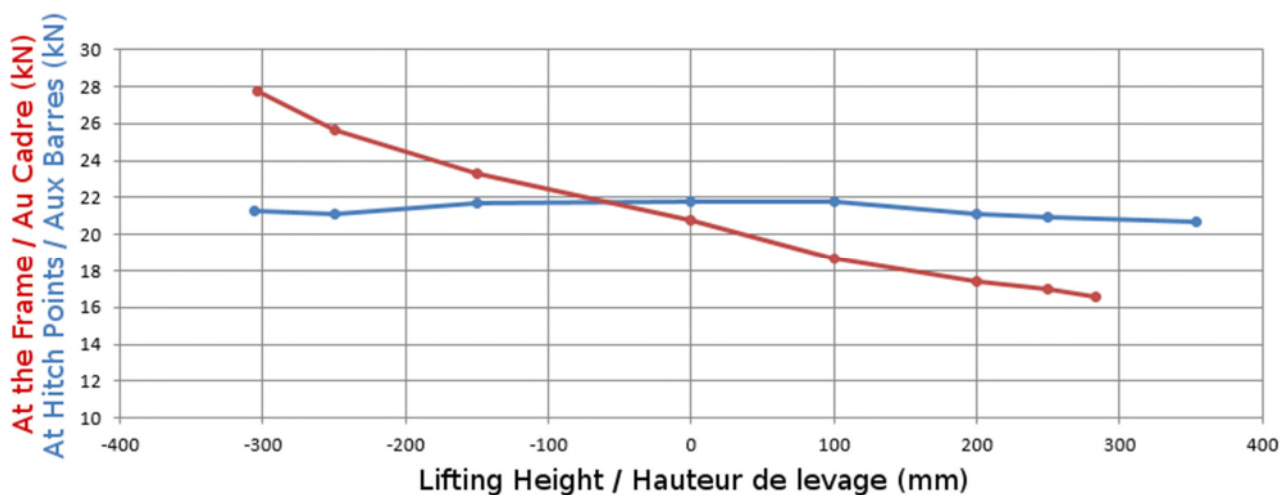
Maximum lifting force

at the hitch points

20,71 kN

at the frame

16,57 kN

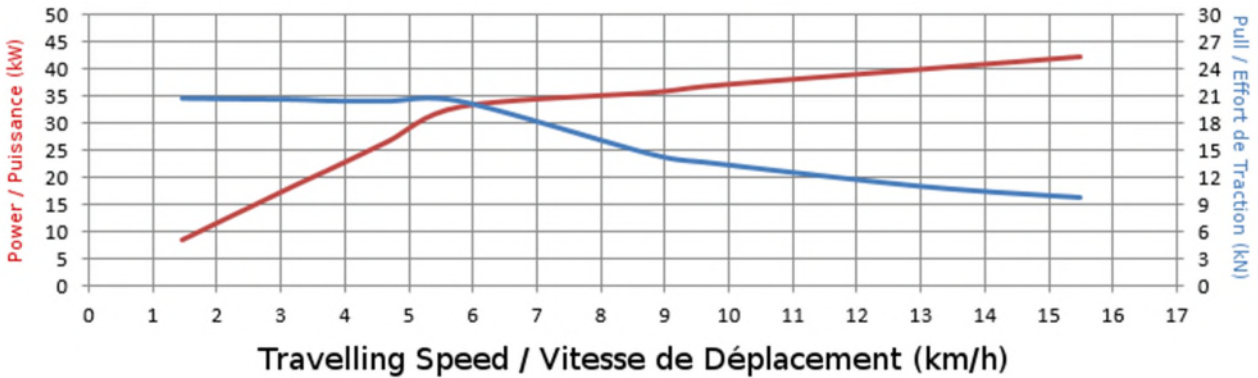


DRAWBAR TEST

| | | |
|-------------------------|------------|------------|
| Front tyres, Rear tyres | 380/70 R20 | 480/70 R30 |
| Inflation pressure | 240 kPa | 160 kPa |

UNBALLASTED

| | |
|----------------------|------------|
| Total Mass | 2750 kg |
| Maximum drawbar pull | 20,85 kN |
| at speed of | 1,46 km/h |
| Maximum power | 42,37 kW |
| at speed of | 15,50 km/h |



BALLASTED

Not available