

# OECD ABSTRACT OF AGRICULTURAL AND FORESTRY TRACTOR PERFORMANCE TEST

---

<b>OECD Approval Number</b>	<b>2/2 899</b>
<b>OECD Approval Date</b>	<b>01/07/2015</b>
<b>Make</b>	<b>Valpadana</b>
<b>Model</b>	<b>4655 ISM</b>
<b>Type</b>	<b>4WD</b>
Transmission	Mechanical
Speed	30 km/h
Manufacturer	ARGO TRACTORS S.p.A.
Testing Station	DISTAL – Italy



## SPECIFICATIONS

### ENGINE

<i>Make</i>	YANMAR
<i>Model</i>	4TNV88-BKVA
<i>Type</i>	Direct injection
<i>Supercharging</i>	No
<i>Cylinders</i>	4
<i>Disposition</i>	vertical in line
<i>Capacity</i>	2190 cm <sup>3</sup>
<i>Cooling</i>	Liquid

### TRANSMISSION

<i>Gear box</i>	Mechanical
<i>Number of forward and reverse speeds</i>	8
<i>Speed at rated engine speed</i>	from 1,21 to 28,13 km/h

### POWER TAKE-OFF SPECIFICATIONS

<i>Standard Power take-off speed</i>	<u>540 min<sup>-1</sup></u>	<u>1000 min<sup>-1</sup></u>
<i>Power take-off speed at rated engine speed</i>	658,8 min <sup>-1</sup>	
<i>Diameter of the shaft</i>	35 mm	Not
<i>Number of splines</i>	6	Applicable

## PTO TEST RESULTS

### One hour test at maximum power

Power, Engine and Power take-off speed	29,0 kW	2801 min <sup>-1</sup>	659 min <sup>-1</sup>
Hourly and specific consumption		9,41 l/h	271 g/kWh
Hourly and specific urea consumption		- l/h	- g/kWh-

### Test at maximum power at rated engine speed

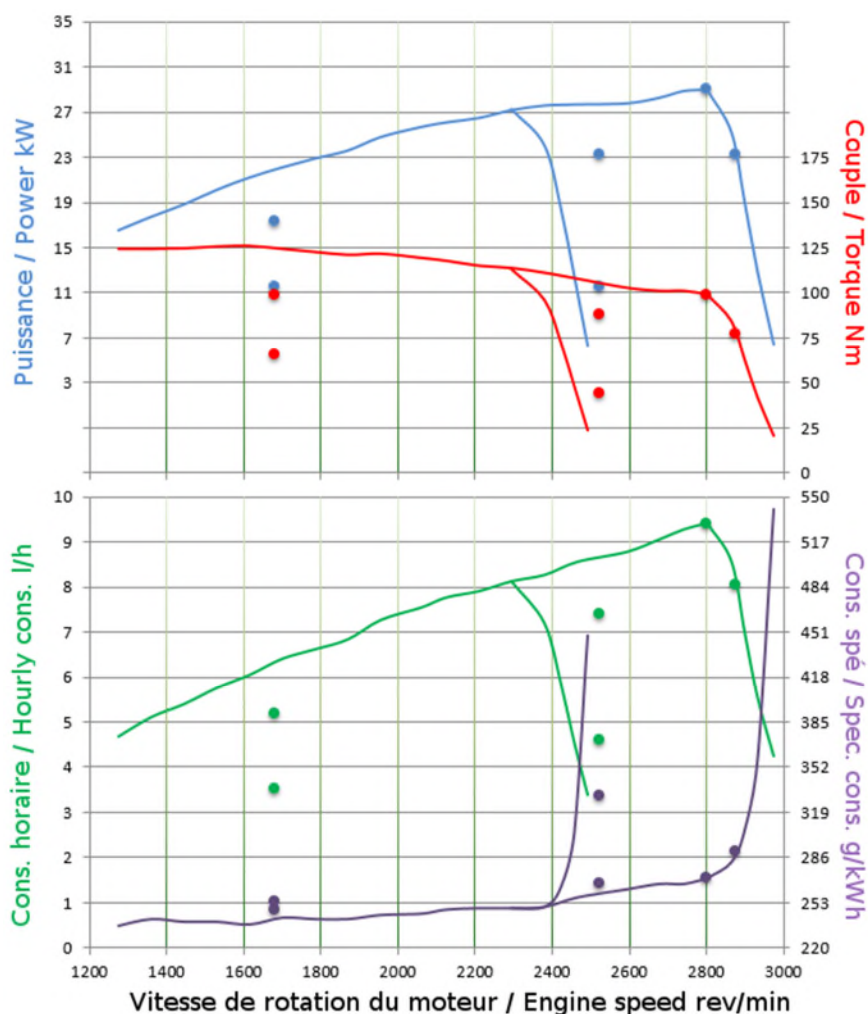
Power, Engine and Power take-off speed	29,0 kW	2801 min <sup>-1</sup>	659 min <sup>-1</sup>
Hourly and specific consumption		9,41 l/h	271 g/kWh
Hourly and specific urea consumption		- l/h	- g/kWh-

### Test at standard Power take-off speed

Power, Engine and Power take-off speed	27,2 kW	2295 min <sup>-1</sup>	540 min <sup>-1</sup>
Hourly and specific consumption		8,12 l/h	249 g/kWh
Hourly and specific urea consumption		- l/h	- g/kWh-

### Torque rise

Maximum torque, Engine speed corresponding	125,6 Nm	1615 min <sup>-1</sup>	27,0 %
--	----------	------------------------	--------



---

 PARTICULATE FILTER ACTIVE REGENERATION FUEL USE
 

---

*Not Applicable*

---

 HYDRAULIC PERFORMANCE AND POWER LIFT TEST
 

---

Hydraulic system

Open centre

Relief valve pressure setting (tolerance):

18 ± 1 MPa

---

 HYDRAULIC PERFORMANCES
 

---

At maximum hydraulic power

Flow rate, Pressure, Power (couplers: 1 pair)

29,5 l/min

15,28 MPa

7,5 kW

Flow rate, Pressure, Power (couplers: 2 pairs or +)

Not

Applicable

---

 POWER LIFT
 

---

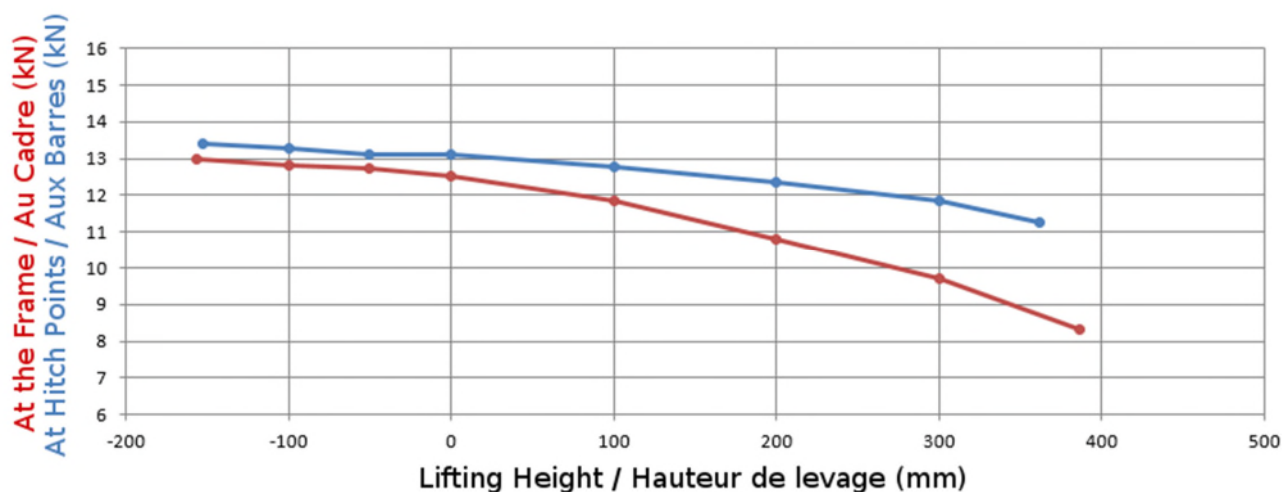
Maximum lifting force

at the hitch points

11,25 kN

at the frame

8,33 kN

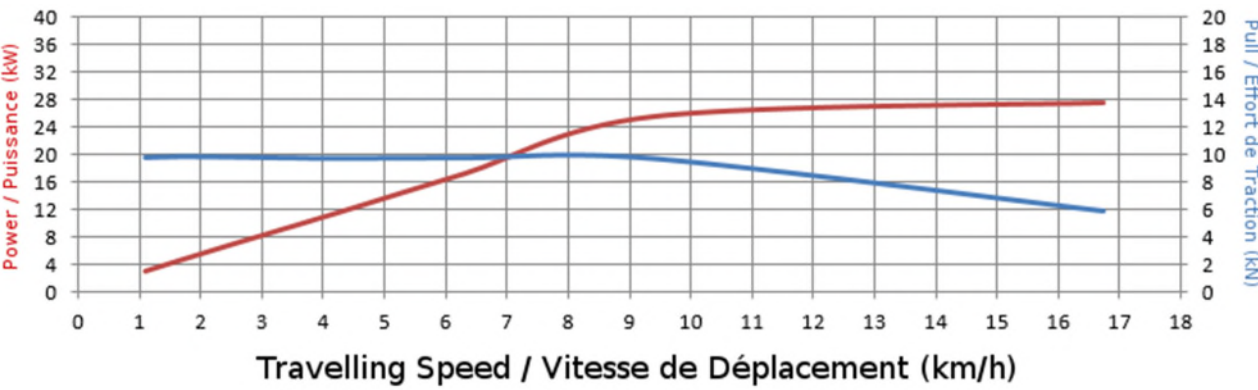


DRAWBAR TEST

Front tyres, Rear tyres	7.50-16	7.50-16
Inflation pressure	225 kPa	225 kPa

UNBALLASTED

Total Mass	1265 kg
Maximum drawbar pull	9,87 kN
at speed of	1,72 km/h
Maximum power	27,45 kW
at speed of	16,75 km/h



BALLASTED

Not Applicable