

OECD ABSTRACT OF AGRICULTURAL AND FORESTRY TRACTOR PERFORMANCE TEST

OECD Approval Number	2/2 846
OECD Approval Date	05/11/2014
Make	PASQUALI
Model	SIENA K6.60
Type	4 WD
Transmission	mechanical
Speed	40 km/h
Manufacturer	BCS S.p.A.
Testing Station	DISTAL – Italy



SPECIFICATIONS

ENGINE

<i>Make</i>		KUBOTA
<i>Model</i>		v2203-M-DI-EU11
<i>Type</i>		Direct injection
<i>Supercharging</i>		No
<i>Cylinders</i>		4
<i>Disposition</i>		vertical in line
<i>Capacity</i>		2197 cm ³
<i>Cooling</i>		Liquid

TRANSMISSION

<i>Gear box</i>		Mechanical
<i>Number of forward and reverse speeds</i>	12	12
<i>Speed at rated engine speed</i>	from 0,88	to 35,11 km/h

POWER TAKE-OFF SPECIFICATIONS

<i>Standard Power take-off speed</i>	<u>540 min⁻¹</u>	<u>1000 min⁻¹</u>
<i>Power take-off speed at rated engine speed</i>	627 min ⁻¹	
<i>Diameter of the shaft</i>	35 mm	<i>Not</i>
<i>Number of splines</i>	6	<i>Applicable</i>

PTO TEST RESULTS

One hour test at maximum power

Power, Engine and Power take-off speed	30,0 kW	2800 min ⁻¹	627 min ⁻¹
Hourly and specific consumption		10,95 l/h	305 g/kWh
Hourly and specific urea consumption		-	-

Test at maximum power at rated engine speed

Power, Engine and Power take-off speed	30,0 kW	2800 min ⁻¹	627 min ⁻¹
Hourly and specific consumption		10,95 l/h	305 g/kWh
Hourly and specific urea consumption		-	-

Test at standard Power take-off speed

Power, Engine and Power take-off speed	28,1 kW	2413 min ⁻¹	540 min ⁻¹
Hourly and specific consumption		9,56 l/h	284 g/kWh
Hourly and specific urea consumption		-	-

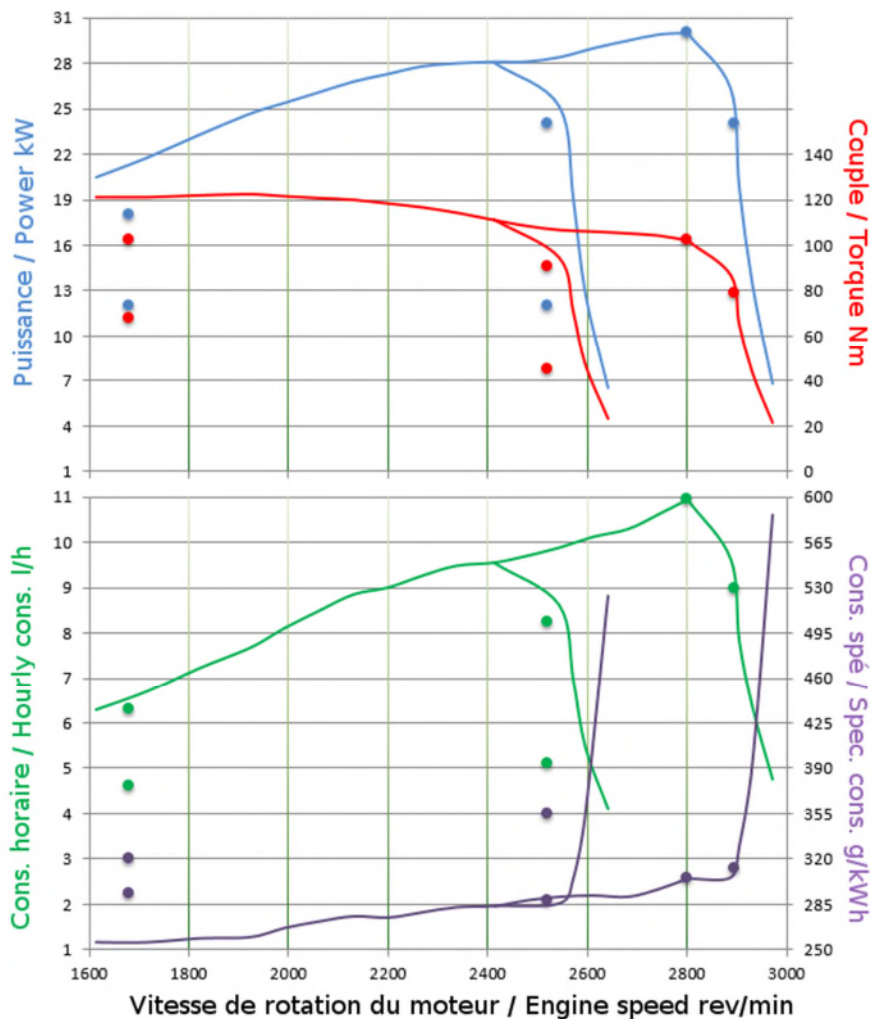
Torque rise

20,1 %

Maximum torque, Engine speed corresponding

122,7 Nm

1925 min⁻¹



PARTICULATE FILTER ACTIVE REGENERATION FUEL USE

Not Applicable

HYDRAULIC PERFORMANCE AND POWER LIFT TEST

Hydraulic system

Open centre

Relief valve pressure setting (tolerance):

18 ± 1,5 MPa

HYDRAULIC PERFORMANCES

At maximum hydraulic power

Flow rate, Pressure, Power (couplers: 1 pair)

28,17 l/min

15,30 MPa

7,18 kW

Flow rate, Pressure, Power (couplers: 2 pairs or +)

Not

Applicable

POWER LIFT

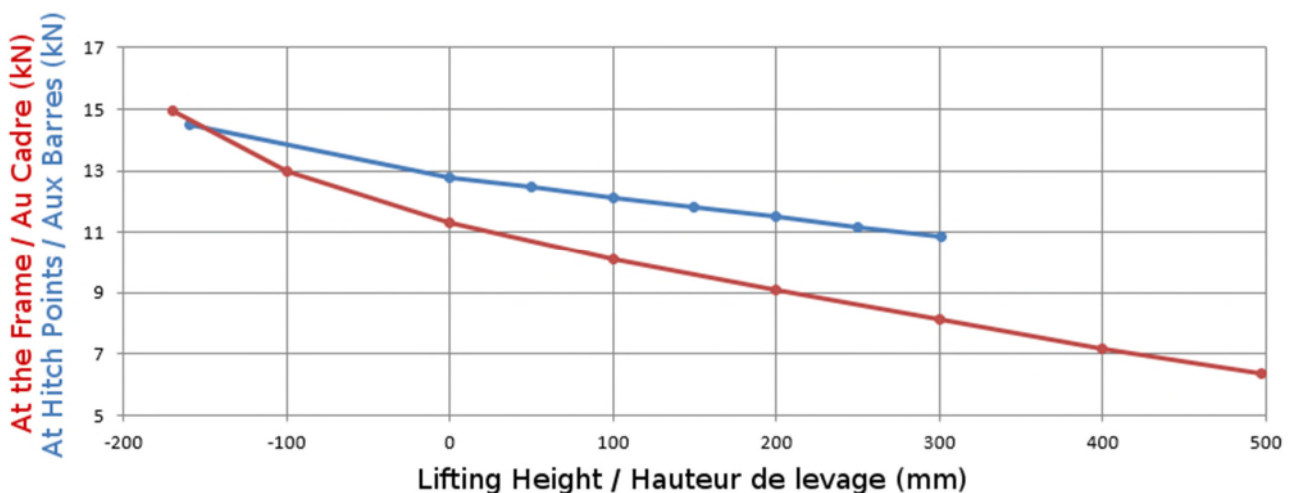
Maximum lifting force

at the hitch points

10,85 kN

at the frame

6,35 kN

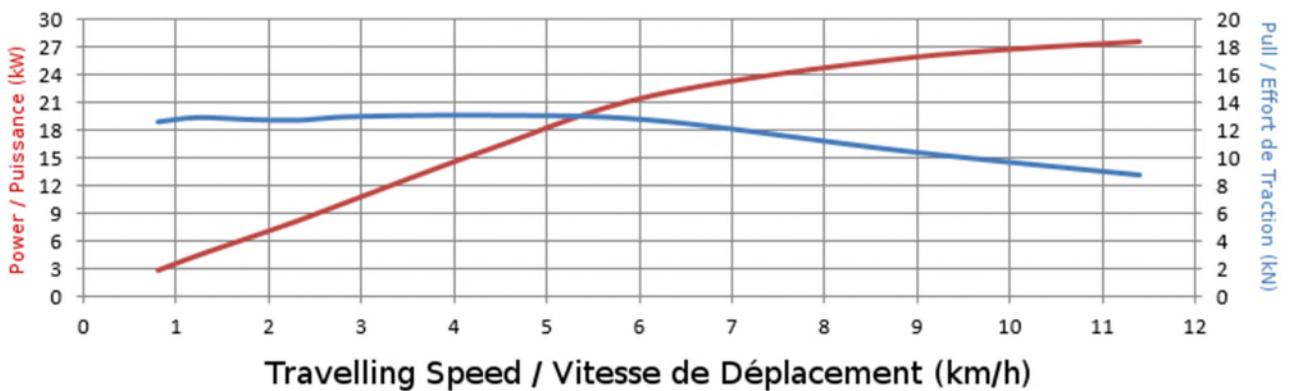


DRAWBAR TEST

Front tyres, Rear tyres	260/70 R20	260/70 R20
Inflation pressure	240 kPa	240 kPa

UNBALLASTED

Total Mass	1505 kg
Maximum drawbar pull	13,13 kN
at speed of	4,40 km/h
Maximum power	27,67 kW
at speed of	11,41 km/h



BALLASTED

Total Mass	1820 kg
Maximum drawbar pull	15,97 kN
at speed of	1,22 km/h
Maximum power	28,42 kW
at speed of	11,33 km/h

